



Product: Garmin Dēzl

Subject: Garmin Messaging

Version: 1.0

Distribution: ODT Customers

Contents

Driver Use Guide	3
Reading Received Messages	3
Creating a New Message.....	4
Dispatch User Instructions	9
DQMessenger Options	9
Location Selections	10
Sending a Message.....	11

Introduction

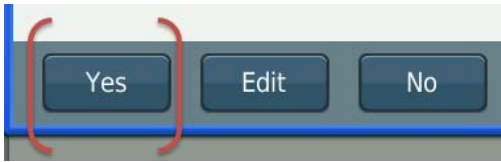
The Garmin Dēzl is an easy to use touch screen device that guides the user through a series of screens and prompts. Selections are made by “touching” the desired Icon or one of the choices displayed on the screen:



Messages Icon



List Icon



Choice to be selected

Make sure the device is powered up and connected appropriately to the Garmin FMI cable (refer to installation guide for any installation questions).

Driver Use Guide

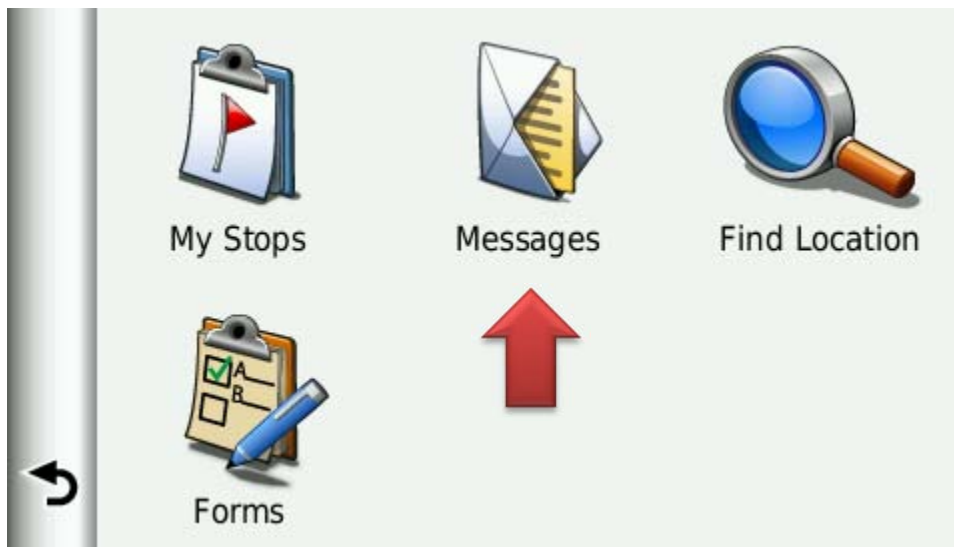
With the Garmin device drivers have the ability to send and receive messages from dispatch.

Reading Received Messages

To view received messages navigate to the dispatch screen by touching the 'Dispatch' icon.

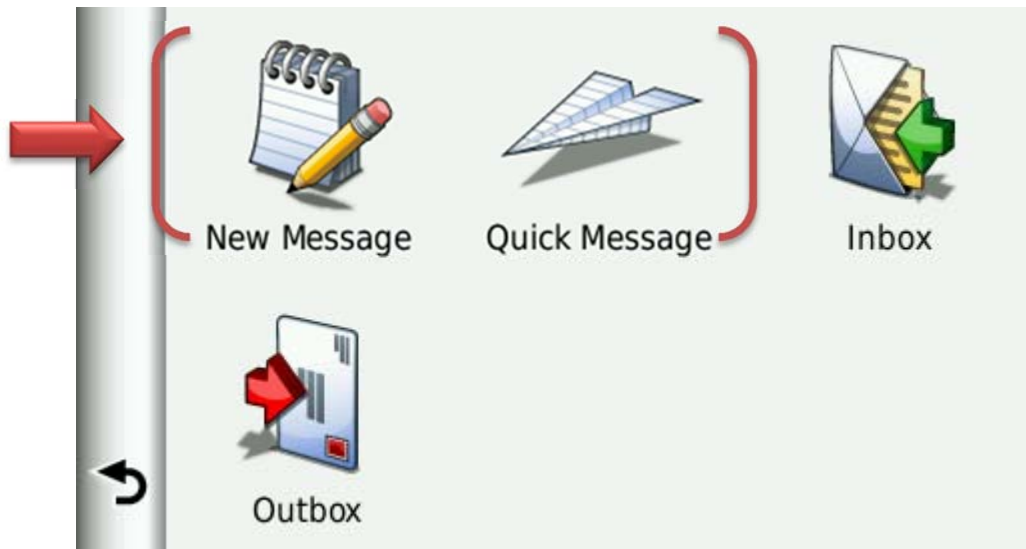


Next, touch the 'Messages' icon to display the available options.

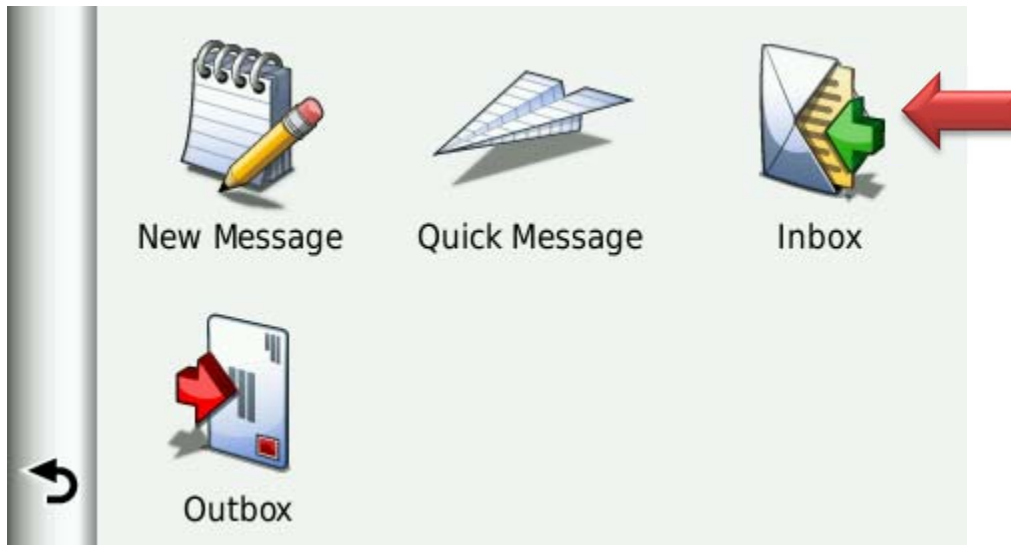


Creating a New Message

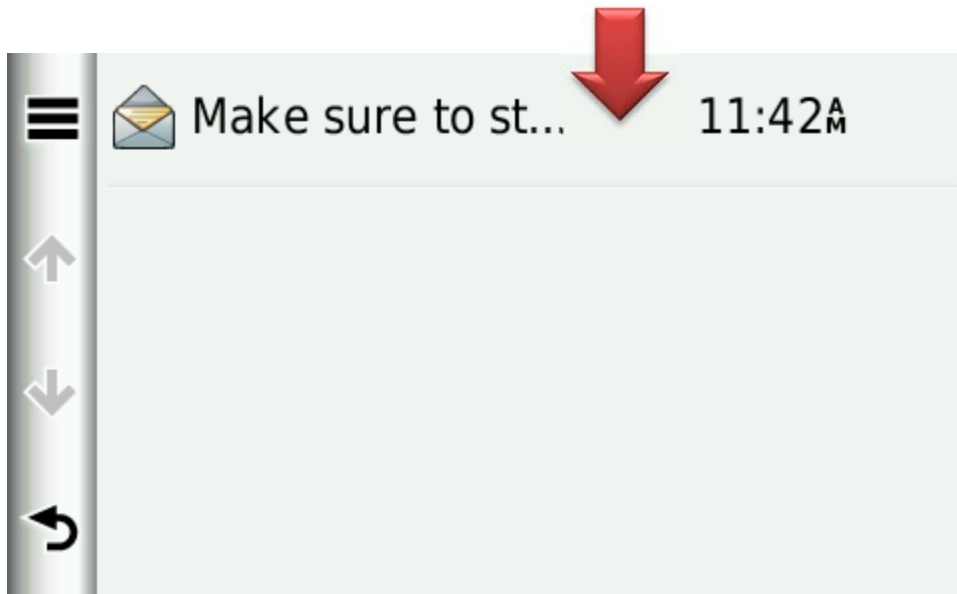
Below is the 'Messages' screen. You can create and send messages to dispatch using the 'New Message' or 'Quick Message' feature simply by touching the icon.



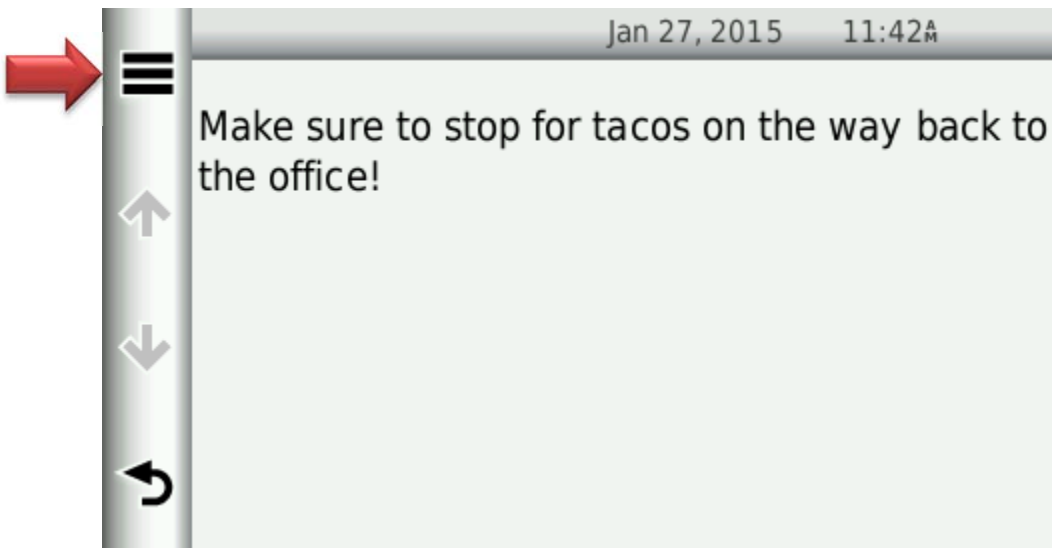
Touching the 'Inbox' icon will display any message(s) sent from dispatch.



Simply touch the message you want to open to view the full content.

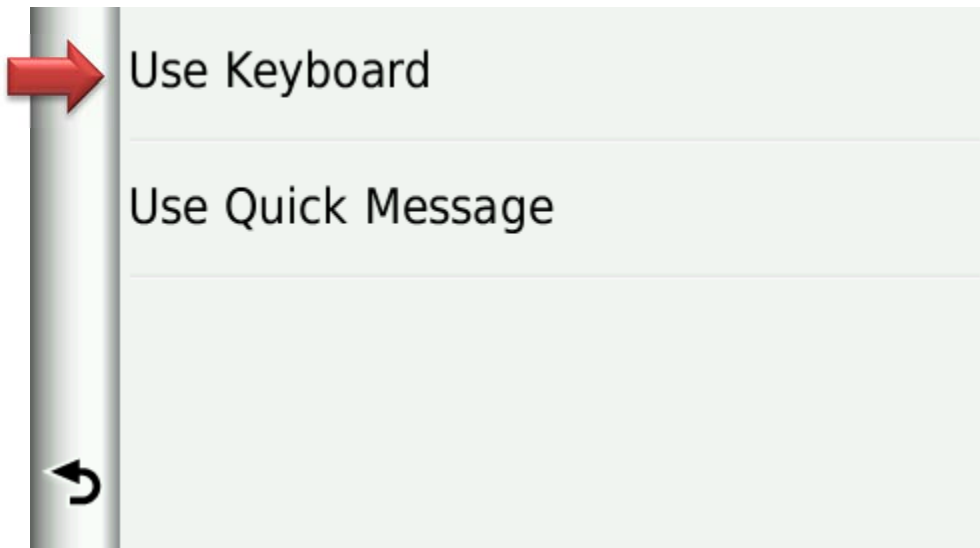


Select the List icon at the top left of the screen and then touch 'Reply' to compose a message back to dispatch.





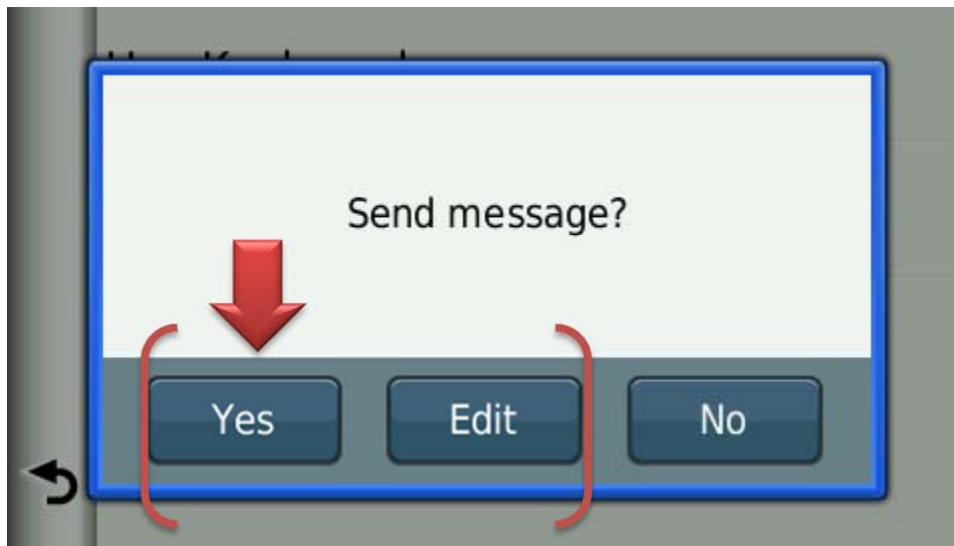
Touch the 'Keyboard' or 'Quick Message' option to respond.
In this example we will use the keyboard option to type your response.



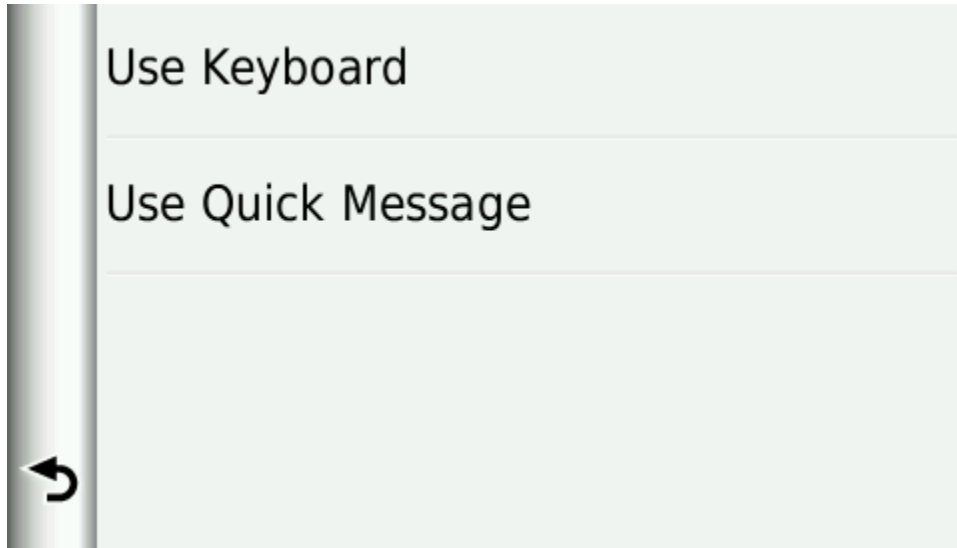
Here we have typed in a response of "Okay" to send to dispatch. When finished typing the message touch 'Done'



The Garmin will now ask if you want to 'Send Message?' Touch 'Yes' to send the message, or 'Edit' to make changes.



Touching 'No' will return you to the selection screen shown below.



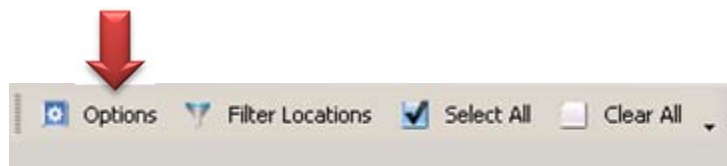
Dispatch User Instructions

From your desktop, open the application by double clicking on the DQMessage View icon.



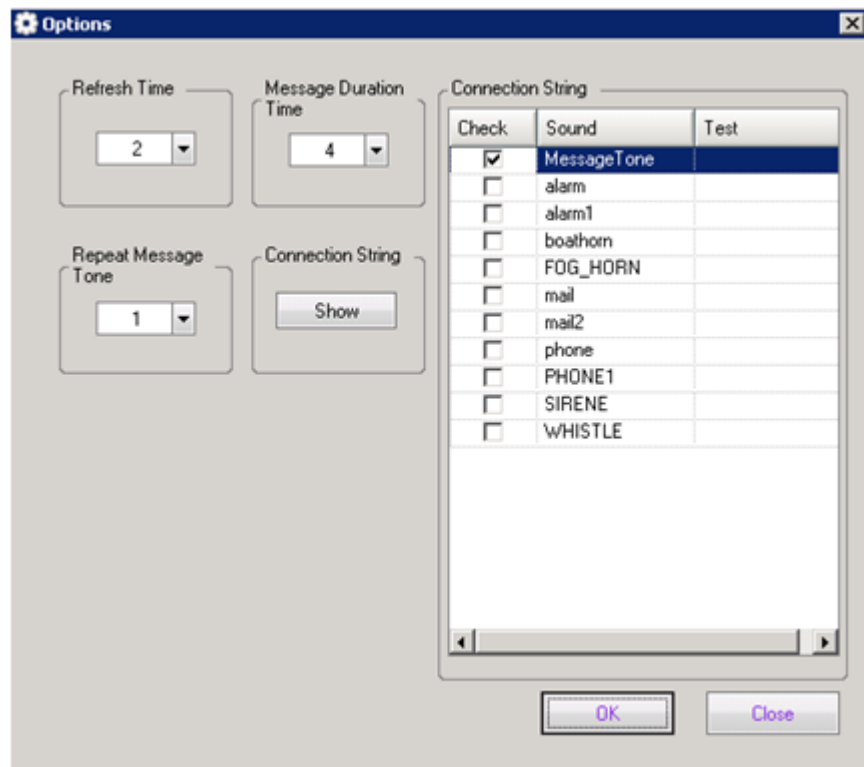
DQMessenger Options

To change options such as the sound made when a message is received or the duration of time a message is displayed click on the 'Options' button located at the top left of the main screen.



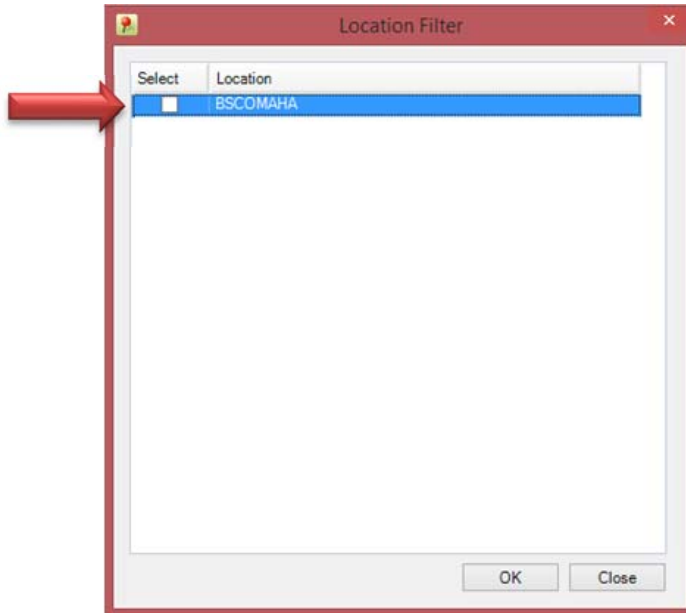
The 'Options' screen has the following settings:

- 'Message Duration Time' is the number of hours a message will be displayed in the message screen.
- 'Repeat Message Tone' controls the number times the selected sound or tone will be played when a message is received.
- 'Refresh Time' is the amount of time between when the system checks for any new messages. Once you have finished making changes, click 'OK' to save your settings and return to the main screen.

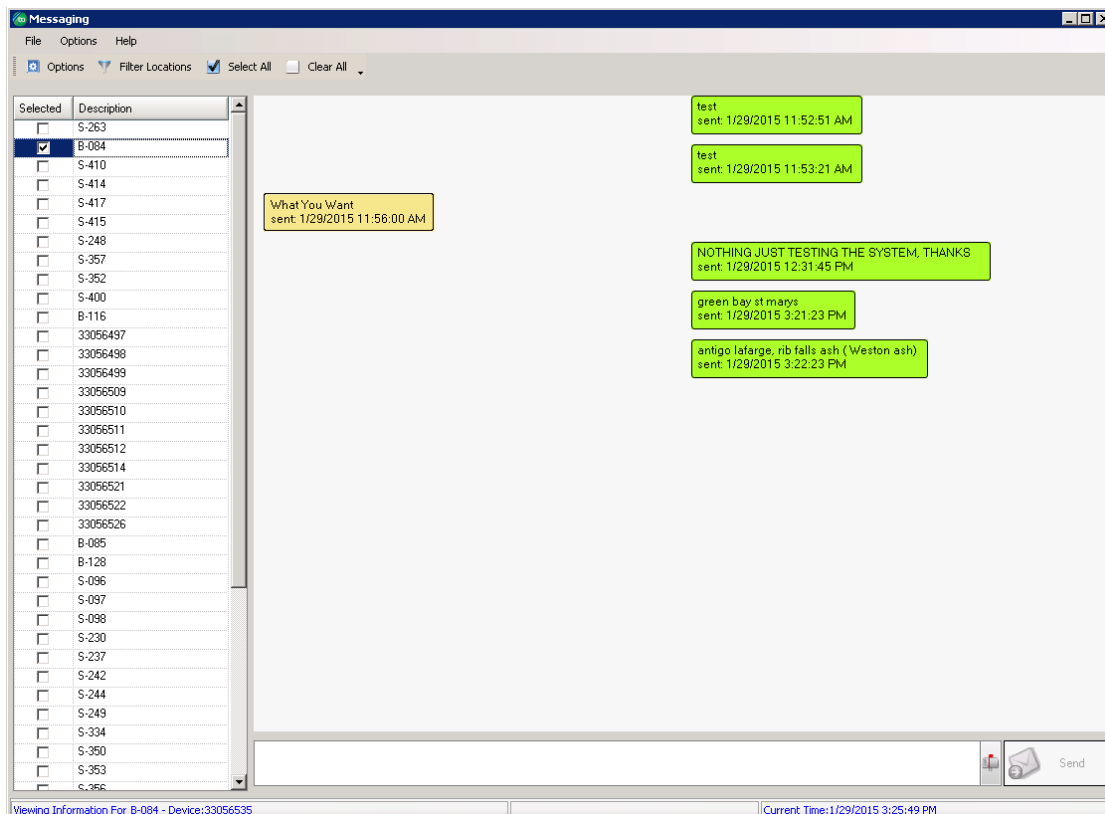


Location Selections

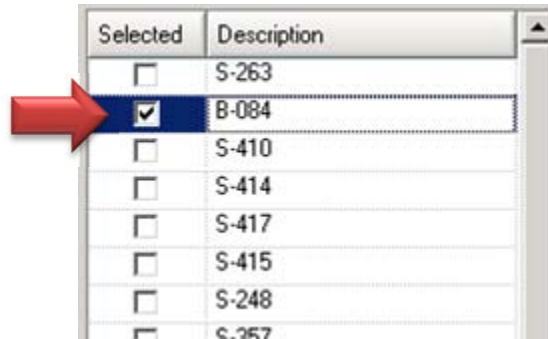
To see devices for only one location, click on the 'Filter Locations' button located at the top left of the application. A list of active locations will appear, to select the location(s) you want to see on the main screen click on the boxes next to the location's name and then click 'Ok.'



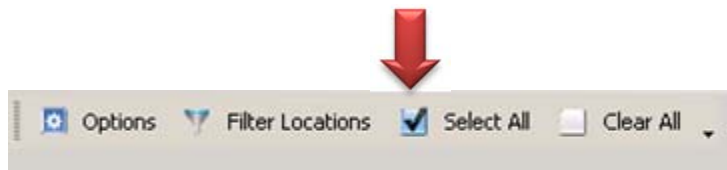
The main screen, shown below, allows you to select the device(s) to send a message.



Use the check boxes on the left side of the screen to select one or multiple devices to send a message. Click the boxes next to the vehicle or device ID to select who to send or not send messages.



To send a message to all drivers use the 'Select All' box located at the top left of the application.



Sending a Message

After selecting the device(s) to send a message to, compose your message in the text field located at the bottom of the main screen. Once the message is complete, click the 'Send' button to deliver the message. Your message and any responses from the driver will be displayed on the main screen as seen below.

